

FOR SUBLEASE NORTHWEST HOUSTON 23800 NORTHWEST FWY | CYPRESS, TX 77429

STOREFRONT RETAIL/OFFICE/MEDICAL SUBLEASE OPPORTUNITY

23800 NORTHWEST FREEWAY / FIRST FLOOR / 7,500 SF



Building Address:	23800 Northwest Freeway
Availability:	Immediate
RSF:	7,500 SF
Term Expiration:	5/31/23
Year 1 Rate:	\$24.00/SF NNN
Annual Increases:	\$0.50/SF/year
TI Allowance:	As-Is
Parking:	5/1,000 SF

Space / Building Features:

- Excellent visibility
- Move-in ready
- Great access off Highway 290
- Mix of offices and open areas
- Building and monument signage available
- Abundant parking



MARGARET ANN COOK

D / 713.275.3797

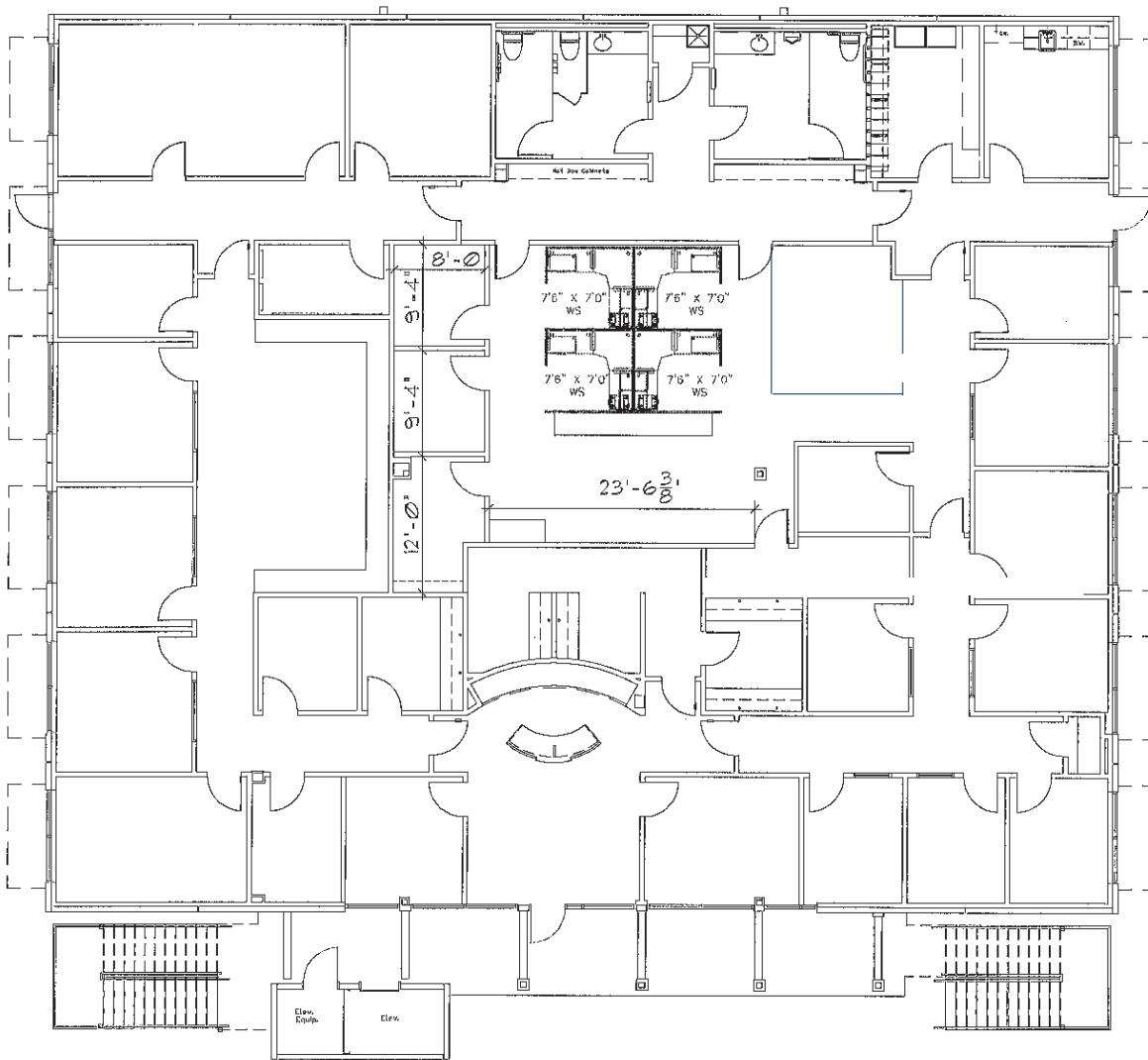
M / 713.775.9385

macook@fritscheanderson.com

FOR SUBLEASE NORTHWEST HOUSTON 23800 NORTHWEST FWY | CYPRESS, TX 77429

CURRENT FLOOR PLAN

23800 NORTHWEST FREEWAY / FIRST FLOOR / 7,500 RSF



MARGARET ANN COOK

D / 713.275.3797

M / 713.775.9385

macook@fritscheanderson.com